



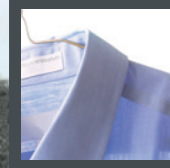
A Division of Ludlow Composites Corporation

GELLED-BLENDED-LATEX

CFTB-PP

PRESSER PAD BLENDED SBR & NATURAL LATEX FOAM

This gelled, blended latex foam is specially formulated for the dry-cleaning industry with a very open cell structure to facilitate optimal steam and air flow.



Dry Cleaning



Our in-house R&D staff and sales teams will readily work with you to develop foam solutions that will meet your specifications.



Our facility includes a full service testing lab, five production units with ovens designed to manufacture PVC and SBR foam products available in flat sheets or rolls.



Certified Company

Ludlow Composites is an ISO 9001:2015 certified company.

Proud Members of GFA



Made to Order Value

Full life span of product

Maximum product flexibility for shape conformance

Meeting your specific foam performance demand!



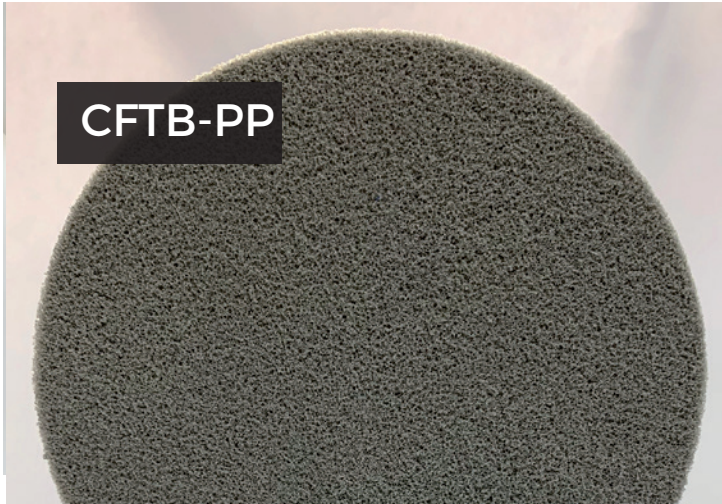
100% Custom Capable

80% of our production orders are custom applications

See page 2 for a complete list of features we can customize for your own specific product run

PRESSER PAD

BLENDED SBR & NATURAL LATEX FOAM



Must Know

- Uniquely formulated for the Dry-Cleaning Industry
- Optimal performance in 5/8" gauge with 33RMA
- Standard product size is 54" x 75 linear foot logs
- Available in Gray or Natural (off white)

Variations in color and softness are a natural effect of SBR or blended latex aging and are not considered to be a manufacturing defect.

General Properties

Specifications	Method	Target & Tolerance
Hardness (RMA/ILD)	ASTM D-2240	45 ±25
Tensile Strength (psi)	ASTM D-412	8 psi Minimum
Elongation (%)	ASTM D-412	100% Minimum
Tear (pli)	ASTM D-412	2.5 Minimum
Compression Set	ASTM D-395	25% Maximum

Values are certified by Crown Foams Laboratory. These properties are general guidelines. Log width/length may vary due to product gauge or custom specification. The general properties are based upon tested samples and are subject to change. General Properties are not to be used for specification purposes.



Recommended Service Temperature
-50° to 225° F (-45°C to 107°C)

Average product viability begins at time of production up to 1 year when stored under optimum conditions (Indoor, 70°F)

Request a Sample Today!

Product Customization

Foam to Fabric Solutions

Colors

Roll Or Sheet Output

Rigid to Flexible Recovery