



A Division of Ludlow Composites Corporation

## SUPERIOR GRADE PERFORMANCE

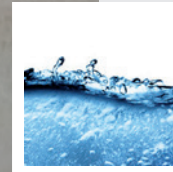
CFTB-IP

# INKPAD BLENDED SBR & NATURAL LATEX FOAM

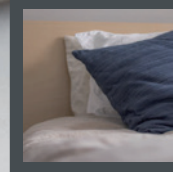
*Our 11#, superior grade, gelled blended latex foam is mechanically frothed and compounded to enhance product capability and performance. It is easy to cut, saw, convolute and slit to the desired shape.*



**Ink Pads**



**Fluid Absorbent Pads**



**Cushion Padding**



*Our in-house R&D staff and sales teams will readily work with you to develop foam solutions that will meet your specifications.*



*Our facility includes a full service testing lab, five production units with ovens designed to manufacture PVC and SBR foam products available in flat sheets or rolls.*



### Certified Company

Ludlow Composites is an ISO 9001:2015 certified company.

Proud Members of GFA



### Made to Order Value

Full life span of product

Maximum product flexibility for shape conformance

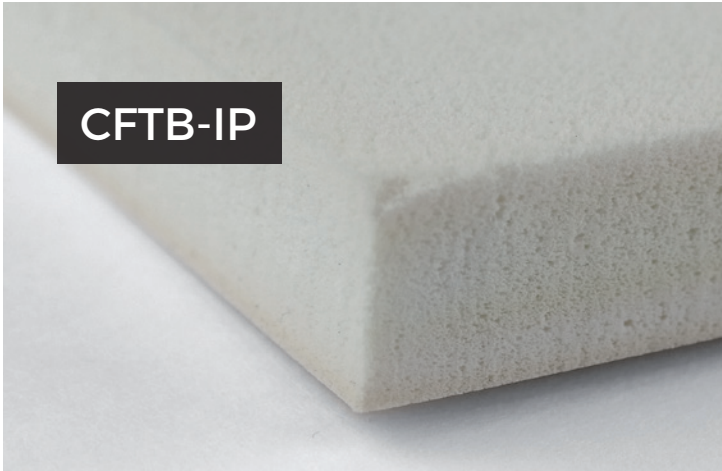
Meeting your specific foam performance demand!



### 100% Custom Capable

80% of our production orders are custom applications

See page 2 for a complete list of features we can customize for your own specific product run



### Must Know

- Very open cell structure to encourage airflow
- Improved wicking ability to allow flow of fluids
- Abrasion and tear resistance
- Easily Fabricated
- Gauges ranging from ¼" to 1/2"
- Popular in 73 or 95 RMA in 36" or 54" widths
- Available in natural (off-white) or custom colors

### General Properties

Specifications	Method	Target & Tolerance
Hardness (RMA/ILD)	ASTM D-2240	55 ±15
Tensile Strength (psi)	ASTM D-412	20 psi Minimum
Elongation (%)	ASTM D-412	150% Minimum
Tear (pli)	ASTM D-412	5 Minimum
Compression Set	ASTM D-395	25% Maximum

Values are certified by Crown Foams Laboratory. These properties are general guidelines. Log width/length may vary due to product gauge or custom specification. The general properties are based upon tested samples and are subject to change. General Properties are not to be used for specification purposes.



*Recommended Service Temperature*  
-50° to 225° F (-45°C to 107°C)

Average product viability begins at time of production up to 1 year when stored under optimum conditions (Indoor, 70°F)

Variations in color and softness are a natural effect of SBR or blended latex aging and are not considered to be a manufacturing defect.

### Firmness

This product is available in Hard, Medium or Soft Firmness.

**HARD**

**MEDIUM**

**SOFT**



The corresponding sample 20 in the Crown Sample Box is Medium.



**Sample #20 in our Box**

### Product Customization

Foam to Fabric Solutions

Colors

Roll Or Sheet Output

Rigid to Flexible Recovery