



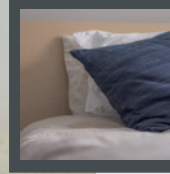
A Division of Ludlow Composites Corporation

## CUSHIONING AND FIRMNESS

### CFTS-FOAMPUFF

# FOAMPUFF™ SYNTHETIC SBR FOAM

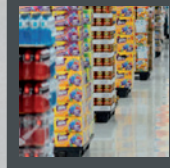
*This trademark synthetic low density SBR foam is created to have a plush feel while providing service longevity. Offers excellent cushioning and firmness. Delivered with a sheet or fabric substrate.*



**Cushioning**



**Footwear  
Manufacturing**



**Consumer  
Applications**



*Our in-house R&D staff and sales teams will readily work with you to develop foam solutions that will meet your specifications.*



*Our facility includes a full service testing lab, five production units with ovens designed to manufacture PVC and SBR foam products available in flat sheets or rolls.*



### **Certified Company**

Ludlow Composites is an ISO 9001:2015 certified company.

Proud Members of GFA



### **Made to Order Value**

Full life span of product

Maximum product flexibility for shape conformance

Meeting your specific foam performance demand!



### **100% Custom Capable**

80% of our production orders are custom applications

See page 2 for a complete list of features we can customize for your own specific product run

# FOAMPUFF™ SYNTHETIC SBR FOAM



## Must Know

- Breathable open cell product
- Easily fabricated
- Available supported on CFT provided substrate or Customer owned good
- Gauge Range: 1/16" – 1/2"
- Standard color: Natural (off-white)
- Custom colors available
- Average Log size: 44"-54" x 150 linear feet

## General Properties

Specifications	Method	Target & Tolerance
Density	ASTM D-3575	14 lbs/ft <sup>3</sup> ± 2 lbs/ft <sup>3</sup>
Hardness (Shore 00)	ASTM D-2240	60 ±10

Variations in color and softness are a natural effect of SBR or blended latex aging and are not considered to be a manufacturing defect.

Values are certified by Crown Foams Laboratory. These properties are general guidelines. Log width/length may vary due to product gauge or custom specification. The general properties are based upon tested samples and are subject to change. General Properties are not to be used for specification purposes.



*Recommended Service Temperature*  
-50° to 225° F (-45°C to 107°C)

Average product viability begins at time of production up to 1 year when stored under optimum conditions (Indoor, 70°F)

## Firmness

This product is available in Hard, Medium or Soft Firmness.

**HARD**

**MEDIUM**

**SOFT**

△ The corresponding sample 16 in the Crown Sample Box is Hard.



**Sample #16 in our Box**

## Product Customization

Foam to Fabric Solutions

Colors

Roll Or Sheet Output

Rigid to Flexible Recovery