



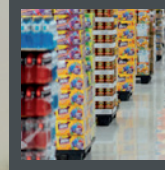
SUPERIOR CUSHIONING AND SUPPORT

A Division of Ludlow Composites Corporation

CFTS-AT

AIRTUFF SYNTHETIC SBR FOAM

This synthetic, medium-high density SBR foam is derived from components that generate excellent rebound and compression resistance while providing superior cushioning and support.



Consumer Applications



Foot Care Products



Footwear Manufacturing



Our in-house R&D staff and sales teams will readily work with you to develop foam solutions that will meet your specifications.



Our facility includes a full service testing lab, five production units with ovens designed to manufacture PVC and SBR foam products available in flat sheets or rolls.



Certified Company

Ludlow Composites is an ISO 9001:2015 certified company.

Proud Members of GFA



Made to Order Value

Full life span of product

Maximum product flexibility for shape conformance

Meeting your specific foam performance demand!



100% Custom Capable

80% of our production orders are custom applications

See page 2 for a complete list of features we can customize for your own specific product run



Must Know

- Available with Bactericide (to reduce the formation of bacteria)
- Easily fabricated for cutting or slitting
- Must be supported on one side using either CFT substrate or Customer owned goods
- Gauge Ranges: 1/16" – 1/4"
- Average Hardness 40+ Durometer
- Standard color: Natural (off white)
- Custom colors available upon request
- Customizable for a wide range of performance demands

General Properties

Specifications	Method	Target & Tolerance
Density	ASTM D-3575	9 lbs/ft ³ ± 1 lbs/ft ³
Hardness (Shore 00)	ASTM D-2240	20 ±10

Values are certified by Crown Foams Laboratory. These properties are general guidelines. Log width/length may vary due to product gauge or custom specification. The general properties are based upon tested samples and are subject to change. General Properties are not to be used for specification purposes.

Variations in color and softness are a natural effect of SBR or blended latex aging and are not considered to be a manufacturing defect.



Recommended Service Temperature

-50° to 225° F (-45°C to 107°C)

Average product viability begins at time of production up to 1 year when stored under optimum conditions (Indoor, 70°F)


Firmness

This product is available in Hard, Medium or Soft Firmness.

HARD

MEDIUM

SOFT

The corresponding sample 18 in the Crown Sample Box is Soft. 



**Sample
#18 in our
Box**

Product Customization

Foam to Fabric Solutions

Colors

Roll Or Sheet Output

Rigid to Flexible Recovery